



New Expanded CE Indications Include:

“Surgical Wounds”

CE Indication

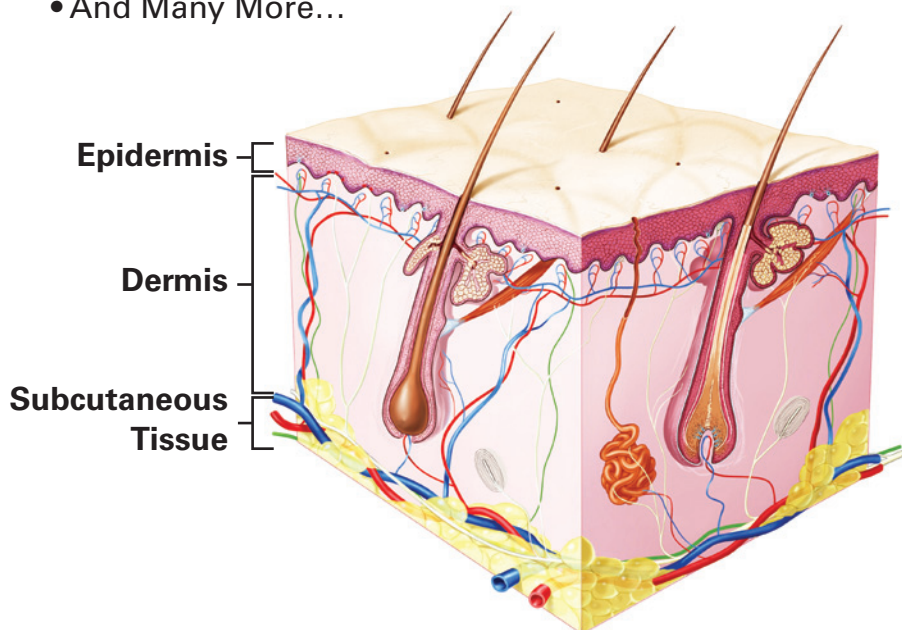
QuikClot Hemostatic Dressings are intended for use as an adjunct to manual pressure for temporary control of moderate external bleeding from **“Surgical Wounds”** (operative, postoperative, donor sites, dermatological, etc) or cuts and lacerations.

“Surgical Wounds”

“Surgical Wounds” include wounds within the subcutaneous layer where bleeding is moderate.

QuikClot is ideal for procedures in subcutaneous tissue such as:

- Reconstructive and Cosmetic Plastic Surgery (Face Lifts, Abdominoplasty, Breast Augmentation, etc)
- Dermatological Procedures (MOHS, Neoplasm Removal, Punch Biopsies, etc)
- Epicardial Pacemaker Placement
- Burn and Wound Debridement
- And Many More...



THE BLEEDING STOPS HERE.

EFFECTIVE

- Works fast – QuikClot promotes clotting within minutes from application
- Independent clinical studies prove efficacy and safety
- QuikClot Combat Gauze is the #1 choice of hemostatic agents for the U.S. Armed Forces since 2008, and continues to be the only hemostatic agent recommended by the U.S. Military's CoTCCC

SAFE

- No known contraindications, no exothermic reaction and no vascular complications
- Inert – no human or animal derived proteins – no thrombin, fibrinogen or shellfish by-products
- Kaolin, the active clotting agent, has been used safely in cosmetic products for many years
- Independent safety data published in the Journal of Trauma (Feb. 2010)

EASY TO USE

- Intuitive – simple-to-use dressing format
- Conforms readily to the wound
- Will not break down or fall apart under pressure

COST EFFECTIVE

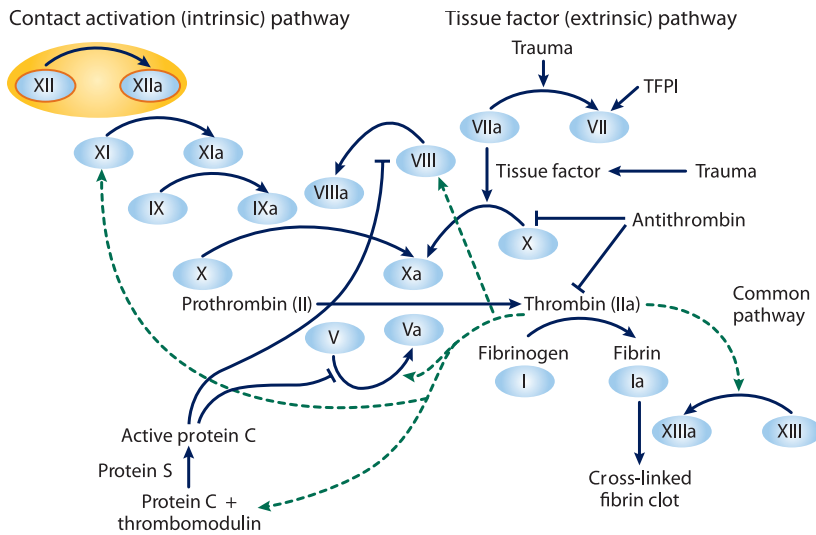
- Safer and less expensive than protein-based products
- Stops bleeding rapidly and may reduce the need for more expensive treatments

An Engineered Product

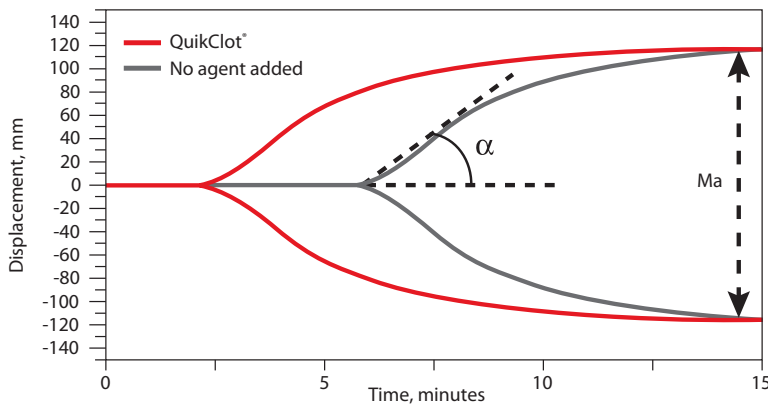
Kaolin directly interacts with Factor XII and leads to its activation. This process will eventually drive the cascade toward clot formation. In addition, kaolin has been known to directly interact with platelet-derived Factor XI. Thus kaolin promotes clotting via direct interface with both plasma derived and also platelet-derived proteins.

Thrombosis Research 60; 87-97; 1990

Clotting Cascade



Thromboelastography (TEG) Clot Time



Source: Adapted from J Trauma. 2010 Feb;68(2):269-78.

Distributor Information

There is a
QuikClot[®]
product for every need
including:



QuikClot 5x5, #302



QuikClot 10x10, #301



QuikClot Pad, #303



QuikClot Gauze
Z-Fold, #268



QuikClot Gauze
Rolled, #202

Manufactured by
Z-MEDICA

4 Fairfield Boulevard
Wallingford, CT 06492 USA
203.294.0000
www.z-medica.com